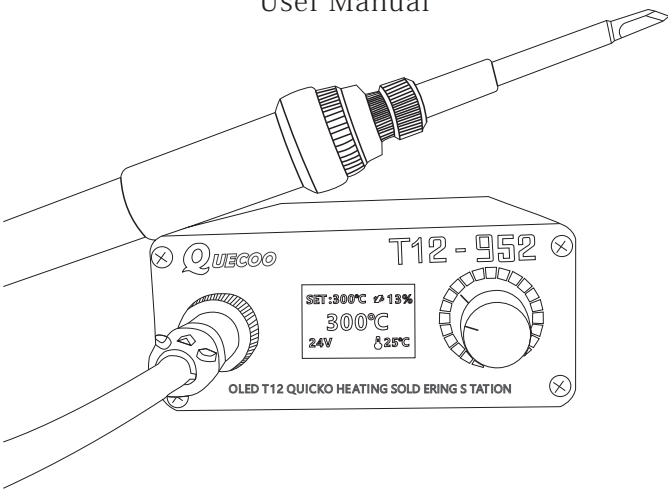


# T12 OLED 数显无铅电烙铁焊台

T12 Lead-free Digital Soldering Station

使用手册

User Manual



适用型号：T12-952/T12-942/T12-956/T12-946焊台

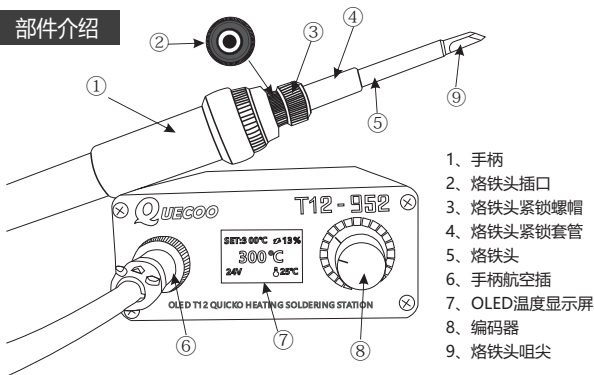
Applicable model: T12-952/T12-942/T12-956/T12-946 soldering station

## QUECOO ELECTRONIC.,LTD

<http://www.quicko.com.cn> support@quicko.com.cn

非常感谢购买QUECOO产品，使用前请详阅本说明书，说明书请妥为保管

## 部件介绍



- 1、手柄
- 2、烙铁头插口
- 3、烙铁头紧锁螺帽
- 4、烙铁头紧锁套管
- 5、烙铁头
- 6、手柄航空插
- 7、OLED温度显示屏
- 8、编码器
- 9、烙铁头咀尖

## 常规安全



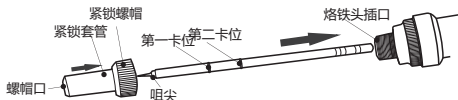
请只使用本产品专用并经所在国家/地区认证的电源适配器。  
 请勿在潮湿环境下操作。  
 请勿在易燃易爆的环境中操作。  
 请保持产品表面清洁干燥。  
 为保护您及家人朋友的安全，在使用完后或离开时请关闭电源，慎防火灾；  
 当主机开机时，烙铁头温度会达到 $100^{\circ}\text{C}\sim 480^{\circ}\text{C}$ ，慎防烫伤。  
 切勿将T12焊台泡水或用湿手使用，慎防漏电。

## 注意事项



使用T12烙铁头时，请将烙铁头螺帽拧紧，避免跌落，损坏烙铁头；  
 焊台在 $350^{\circ}\text{C}$ 以上连续使用40分钟，手柄前端温度将会达到 $50^{\circ}\text{C}\sim 60^{\circ}\text{C}$ 。  
 全新T12烙铁头初次使用时，因烙铁头内部电偶原件加升温可能温度跳动，这属于正常现象，反复使用几次后，温度将会稳定。

## 烙铁头安装

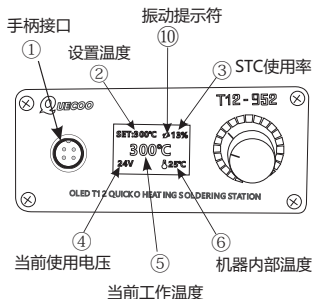


第一步：取下手柄紧锁螺帽，将烙铁头插入烙铁头插口中，使烙铁头的第二卡位与手柄烙铁头插口持平！  
 第二步：将紧锁套管套入紧锁螺帽中，将螺帽与套管的整体从烙铁头咀尖套入烙铁头，使螺帽口与烙铁头第一卡位持平，然后拧紧螺帽，即安装完成！

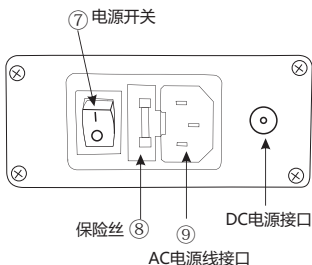
注意：通电后，显示屏提示ERROR，表示烙铁头可能未安装好，请重新安装烙铁头。

上面是907手柄的安装方法，如果您购买的是M8或P9手柄，只需要直接拔插烙铁头！

## 面板介绍



正面



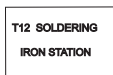
942/946等迷你型不含保险丝及AC电源接口。

背面

## 产品参数

产品型号	T12
屏幕	OLED
手柄接口	GX12-4pins
产品重量	标配510g
主机尺寸	120*88*38mm (迷你机41*88*38mm)
手柄线长	1.1m
适用烙铁头	T12 系列
化锡时间	<8S
最大功率	108W (迷你机不适用)
温度范围	200-480°C
电源电压	24V 4.5A
输入电压	AC100-240V (迷你机不适用)

## 显示屏说明



开机初始状态



未插烙铁头



正常工作

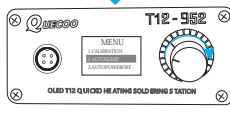
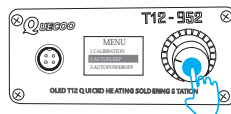
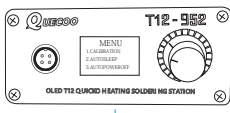
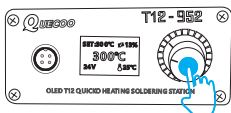


一键强温



注意：在确认各部件安装无误后，新烙铁头插入手柄，显示屏会乱闪或显示ERROR，主机蜂鸣报错，此为正常现象，持续加热5-20分钟后，会逐渐恢复正常。主机温控范围：200℃-480℃常用工作温度300℃-380℃。为了保护烙铁头使用寿命，建议您不要高于380℃使用！

## 菜单使用



进入菜单设置界面：在正常工作温度界面下，长按编码器按钮（大概3s），进入主机设置模式！退出菜单设置界面：在菜单设置界面下，长按编码器按钮（大概3s），退出主机设置模式！

设置功能菜单：

进入设置功能项：将编码器旋转旋钮旋转至相应功能项，短按进入功能项设置！

退出设置功能项：在用编码器旋转旋钮设置好相应参数后，短按确认并退出功能项

## 其它功能

### 1-温度校准

进入菜单，旋转编码器，选择温度校准功能项后，短按编码器，进入温度校准设置，可调温度比率值：70-130%，若无专业测量仪表，请将比率值设置为100%。

### 2-休眠时间

进入菜单，选择休眠时间功能项后，短按编码器，进入休眠时间设置，时间设定范围：0-99分钟，如不需要休眠功能，可以将休眠功能项设定为OFF。

默认休眠时间为1分钟，在主机及手柄静止不动1分钟后，主机自动进入休眠状态，此时烙铁头温度会下降至150℃，当拿起晃动手柄或旋转编码器时，主机迅速升温至休眠前的工作温度。可根据使用场景及工作习惯设定休眠时间，以延长烙铁头使用寿命及保护您及家人朋友的安全！

## 其它功能

### 3-自动休眠时间

进入菜单，选择自动关机时间功能项后，短按编码器，进入关机时间设置，时间设定范围：0-99分钟，如不需要关机功能，可以将关机功能项设定为OFF。

默认关机时间为1分钟，在主机在进入休眠状态1分钟后，仍未使用，主机会自动进入关机状态，此时烙铁头温度会缓慢下降至室温（注：主机的控温范围是200-480℃，低于100℃时显示温度值会出现较大偏差，请忽视。），当拿动手柄或旋转编码器时，主机迅速升温至休眠前的工作温度。可根据使用场景及工作习惯设定关机时间，以延长烙铁头使用寿命及保护您及家人朋友的安全！

### 4-加强时间

进入菜单，选择加强时间功能项后，短按编码器，进入加强时间设置，时间设定范围：0-99分钟。

默认加强时间为30秒，可根据实际需要进行设定，设定好后短按编码器确认并退出。在正常工作时，需要短时间增加温度焊接较大的焊点，可以按下编码器后温度会快速升温到设定的温度，持续30秒后，主机会自动降回原来的温度。这样可避免高温使用时忘记调低温度使烙铁头加快氧化！

### 5-加强温度

进入菜单，选择加强温度功能项后，短按编码器，进入加强温度设置，温度设定范围：10-80℃。

默认加强温度为30℃，可根据实际需要进行设定，设定好后短按编码器确认并退出。在正常工作时，需要短时间增加温度焊接较大的焊点，可以按下编码器后温度会快速升温到设定的温度，持续30秒后，主机会自动降回原来的温度。这样可避免高温使用时忘记调低温度使烙铁头加快氧化！

### 6-唤醒方式

进入菜单，选择唤醒方式功能项后，短按编码器，进入唤醒方式设置，系统提供两种唤醒方式：编码器+手柄、编码器。

当选择编码器+手柄时，自动关机状态下，晃动手柄或短按或旋转编码器均可唤醒主机！

当选择编码器时，自动关机状态下，短按或旋转编码器可唤醒主机，但晃动手柄不能唤醒主机！

默认设置为：编码器+手柄，可根据实际需要进行设定。

### 7-蜂鸣开关

本版本OLED控制器集成有蜂鸣器，声音提示主机状态，在主机遇到错误或在设定相应功能项时，蜂鸣器会发出“哔”的声音。

### 8-欠压保护

根据主机所处电压环境不同，本焊台内置欠压保护功能，默认值为12V。当电压不稳定时，电源会根据设定增压，一般无需设置。设置范围12V-24V。

## 售后服务

T12焊台主控部分在非人为损坏情况下1年免费保修。保修服务请与购买的销售商联系！烙铁头属消耗品，其寿命与烙铁头的保养、使用次数有关，一经使用不予退换货。联系方式：13713635953（手机微信同号）网站：[www.quicko.com.cn](http://www.quicko.com.cn)

**您的满意是我们前进的动力!**

Your satisfaction is our dream!

**QUECOO**

**Made in china**

中国 深圳 <http://www.quicko.com.cn>

<b>EC</b>	<b>REP</b>
-----------	------------

**eVatmaster Consulting GmbH**

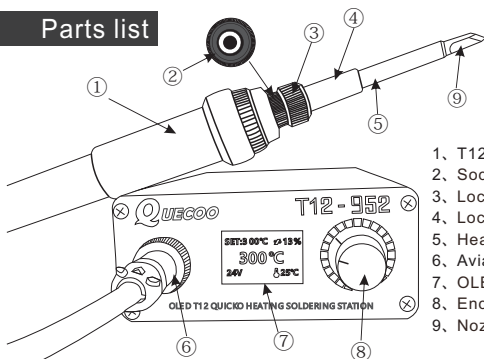
Bettinastr. 30

60325 Frankfurt am Main, Germany

[contact@evatmaster.com](mailto:contact@evatmaster.com)

**QUECOO ELECTRONIC.,LTD**

## Parts list



- 1、T12-907 Handle
- 2、Socket of iron tip
- 3、Locking nut for iron tip
- 4、Lock tube for iron tip
- 5、Head of iron tip
- 6、Aviation Plug of handle
- 7、OLED temperature display
- 8、Encoder
- 9、Nozzle tip

## Conventional safety



Please use only the power adapter that is dedicated to the product and is certified by the country / area.

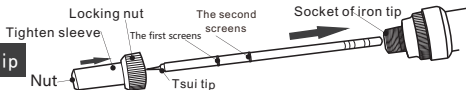
Do not operate in a wet environment. Do not operate in a flammable and explosive environment.

Please keep the surface of the product clean and dry. To protect your family and friends for the safety, please power off after use or leave, beware of fire.

When the host is starting up, the temperature of iron tip will be reached 100°C to 480 °C, beware of scalds. Do not be soaked in water or with wet hands to use the soldering station, prevent leakage.

When using the T12 iron tip please tighten the nut for soldering head to avoid falling and damaging the iron tip.

The temperature will be reached above 350°C of soldering station is used for 40 minutes, and the temperature of the front end of the handle will be reached 50°C - 60°C. When the new T12 soldering iron tip is used for the first time, Host will appear temperature jump and display ERROR, it will become a normal phenomenon due to the heating of the inner galvanic couple part of the iron tip. After repeated use several times, the temperature will be stabilized.



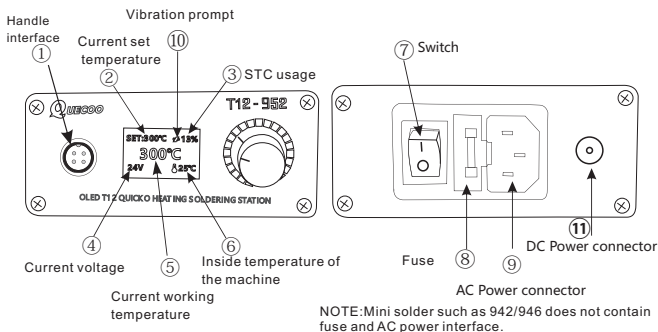
## Install iron tip

First step: remove the handle locking nut, insert the iron tip to iron head socket, let the second clamping and handle iron head socket is flat!

Second step: Put the tube to the locking nut, let the nut and the tube from the iron head nozzle tip into the iron tip, the nut head and the iron tip is flat with first clamping, then tighten the nut, the installation is complete!

Note: Turn on the button, the display screen shows ERROR, indicating that the iron tip may not be

## Pannel



Front pannel

Back pannel

## Product parameter

Model number	T12
Display	OLED
Handle interface	GX12-4pins
Product weight	Standard 510g
Dimension of host	120*88*38mm (MINI 41*88*38mm)
Wire length of handle	1.1m
Application iron tip	T12 series
Time of melt tin	<8S
Max power	108W (Mini Solder is not applicable)
Range temperature	200-480°C
Voltage of power	24V 4.5A
Input voltage	AC100-240V (Mini Solder not applicable)



## Display

T12 SOLDERING  
IRON STATION

Initial state of power off

SET: 300°C 100%  
**ERROR**  
24V 25°C

Non plugged  
iron tip

SET: 300°C 113%  
300°C  
24V 25°C

Normal  
working state

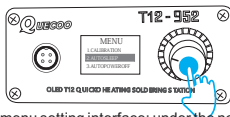
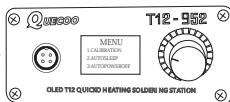
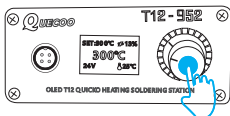
BOOST: 350°C 113%  
300°C  
24V 25°C

BOOST



Note: after confirming the installation of the components is right, the new iron tip is inserted into the handle and the display screen will be a flash or ERROR, and the host buzz is wrong. It's normal. After heating 5-20 minutes, it will return to normal gradually. Temperature control range of main engine: 200°C -480 °C. The common welding temperature is 300°C -380°C. In order to protect the working life of the soldering iron tip, it is recommended that the temperature do not more than 380°C!

## Menu



Enter the menu setting interface: under the normal working temperature interface, long press the encoder button (about 3s). Enter the host setup mode! Exit menu settings interface: at the menu setting interface, long press the encoder button (about 3s), exit the host setup mode!

Enter the function item: rotate the encoder to the corresponding function, and short press the button to enter the function item.

Exit setting function item: after setting the corresponding parameters with the encoder rotary knob, short press the button to confirm exit the function item.

## Other functions

### 1-Temperature calibration

After selecting the temperature calibration function, short press the encoder to enter the temperature calibration setting, the adjustable temperature ratio: 70%-130%, if there is no professional measurement instrument, please set the ratio value to 100%.

### 2-Sleeping time

Choosing sleeping time feature, short press encoder, into the sleeping time setting, the time setting range: 0-99 minutes, if you don't need the sleeping time function, the dormancy feature can be set to OFF. Default sleeping time for 1 minute, means after 1 minute the host and handle is stand still, the soldering station will entry to dormant state, the temperature of soldering iron tip will drop to 150°C, at this time when move handle or rotary encoder, the soldering station will rapidly heat up the working temperature before Sleeping.

You can set the sleeping time according as the usage scenario and working habit, it can be extended the working life of the iron tip and protect your family and friends safe!

### **3-Power off time**

Choosing power off time feature, short press encoder, into the power off time setting, the time setting range: 0-99 minutes, if you don't need the power off time function, the power off function can be set to OFF. Default power off time for 1 minute, means after 1 minute the host and handle is stand still, the soldering station will entry to power off time state, the temperature of soldering iron tip will drop to indoor temperature (note: The temperature control range of the host is 200-480°C, it will appear larger deviation when the temperature less than 100°C. Please ignore it.). At this time when move handle or rotary encoder, the soldering station will rapidly heat up the working temperature before power off. You can set the power off time according as the usage scenario and working habit, it can be extended the working life of the soldering iron tip!

### **4-Strengthening time**

After choosing strengthen the time function, short press the encoder and enter the time setting. The time setting range: 0-99 minutes. The default time is 30 seconds, it can be set according as the actual needs, after setting, short press the encoder to confirm and exit. When working normally, it takes a short time to increase temperature welding the larger welding spot, it can be heated to the set temperature rapidly after pressing the encoder. After 30 seconds, the host will automatically return to original temperature. This can avoid soldering iron tip oxidation when with high temperature to use!

### **5-Strengthening temperature**

After choosing strengthen the function of temperature, short press the encoder, enter strengthening temperature setting, the temperature setting range: 10-80 °C. The default strengthen temperature is 30 °C, it can be set according as actual needs, after setting, short press the encoder to confirm and exit. When working normally, it takes a short time to increase temperature welding the larger soldering spot, it can be heated to the set temperature rapidly after pressing the encoder. After 30 seconds, the host will automatically return to original temperature. This can avoid soldering iron tip oxidation when with high temperature to use!

### **6-Wake-Up type**

After selecting the wake-up function, short press the encoder, enter setting of wake-up type, the system provides two kinds of wake-up type: encoder together with handle or just encoder. When choosing encoder + handle, the soldering station is automatic power off, shaking handle or short press or rotary encoder, all can wake-up the host! When choosing the encoder, the automatic shutdown state, short press or rotary encoder can wake-up the host, but shaking handle cannot wake-up the host! The default setting is: encoder + handle, which can be set according to actual needs

### **7-Battery guard**

According to the voltage environment of the host, built-in battery guard function of this soldering station, and the default voltage is 12V. When the voltage is not stable, the power supply will be supercharged according to the setting. Usually don't need to set it. The setting range is 12V-24V.

### **8-Restore default**

Restore the parameters of the soldering station to the factory default. Note: please back-up your usual important parameters before you restore factory Settings to prevent data loss. For example: temperature calibration value, strengthening time and temperature, etc.

## **After-sales service**

T12 soldering station host in non-human damage to provide 1 year free warranty service. Warranty service, please contact the seller to buy! Iron head is a consumables, its life and maintenance of the tip, the use of the number of the first use can not be returned or replacement.

Wechat:louisjun2013 Whatsapp:+008613713635953 Website:www.quicko.com.cn